

LIGHTBOXES



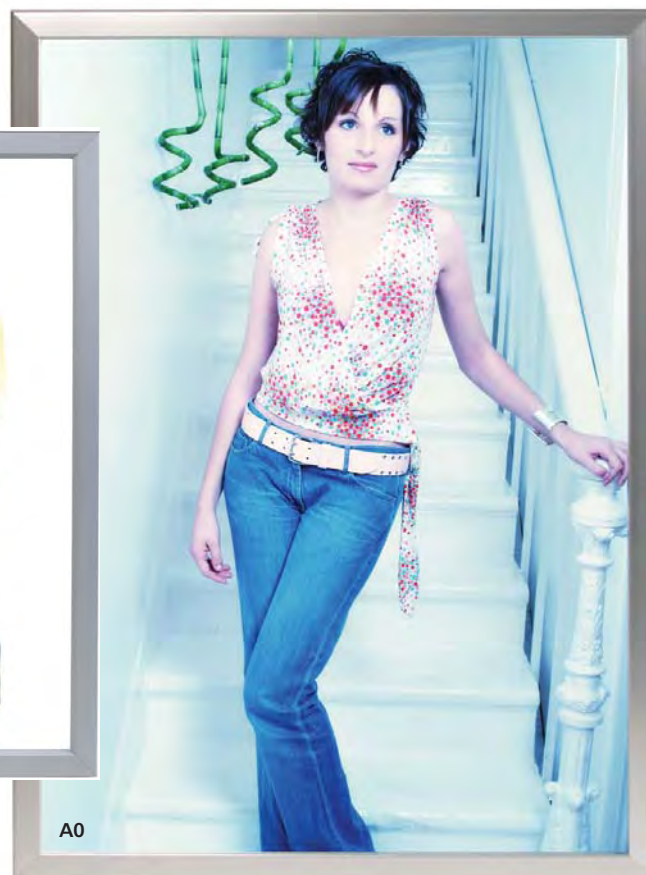
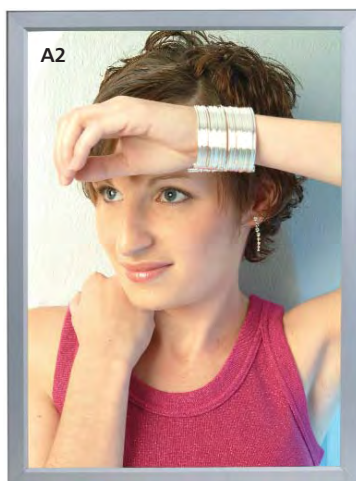
Illuminated posters have been proven to attract more customers and increase sales instantly



Light boxes - single & double sided

Cold cathode light boxes

- cold cathode light boxes use the very latest light technology, making them incredibly bright and light weight.
- extremely long lamp life - up to 50,000 hours (approx. 5 years)
- lux level at panel centre of A1 unit is 1092 lux, making it one of the brightest around
- supplied with a 3-pin plug
- stylish, slim silver anodised click frame, 30mm wide x 35mm deep
- available in sizes A4 - A0
- use wall mounted or suspended on cable/rod system



Single sided light boxes

| Item Code: | Size: | Frame size | Viewing area | Max graphic area | Price £: |
|------------|-----------|------------|--------------|------------------|----------|
| LBA4-CC | A4 | 257 x 334 | 197 x 284 | 215 x 302 | 145.00 |
| LBA3-CC | A3 | 244 x 467 | 284 x 407 | 302 x 435 | 205.00 |
| LBA2-CC | A2 | 467 x 641 | 407 x 581 | 435 x 599 | 265.00 |
| LBA1-CC | A1 | 641 x 886 | 581 x 828 | 599 x 845 | 345.00 |
| LBA0-CC | A0 | 886 x 1235 | 828 x 1175 | 845 x 1193 | 508.00 |

All sizes given in mm and width x height

Double sided light boxes

- double sided units can be suspended from cable/rod systems - ask for details

| Item Code: | Size: | Frame size | Viewing area | Max graphic area | Price £: |
|------------|-----------|------------|--------------|------------------|----------|
| LBDA2-CC | A2 | 467 x 641 | 407 x 581 | 435 x 599 | 462.00 |
| LBDA1-CC | A1 | 641 x 886 | 581 x 828 | 599 x 845 | 605.00 |

All sizes given in mm and width x height

PAPER SIZE CHECK: **A5** = 148 x 210mm **A4** = 210 x 297mm **A3** = 297 x 420mm **A2** = 420 x 594mm **A1** = 594 x 841mm **A0** = 841 x 1188mm

Light boxes - suspended

- Completely even spread of light which eliminates shadows
- Takes inkjet prints, duratans or standard paper up to 135gsm

- Graphics can be changed in seconds
- Extremely slim floating light boxes, single or double sided
- Invisible power supply, no ugly power cables

Cold cathode light boxes



Compact cold cathode light box with a silver plastic frame suspended on cables/rods with a low-voltage 12 volt power supply. Uses the very latest light technology.

Units can be used as headers with acrylic pockets underneath, as a set of 3 units to create a really powerful illuminated display or with the digital screen as part of a high technology presentation.

- size A3 - can be used portrait or landscape
- incredibly bright - approximately 2000 lux
- cold cathode tube with an average lamp life 50,000 hrs (approximately 5 years)
- units are incredibly light weight
- graphics can be changed in seconds
- profile size 40mm width x 25mm depth

See Digital Display page 64 for full details and components required for installation.



| Item Code: | Size: | Price £: |
|------------|--|----------|
| DCA3 | A3 single sided, landscape/portrait supplied with PO2 supports | poa* |
| DCDA3 | A3 double sided, landscape/portrait supplied with PO2 supports | poa* |

* See website for current prices

XtraLite



Profile at top and bottom only



Use XtraLite in windows and interiors. Ideal for exhibition stands, reception areas and information centres.

Standard XtraLite:

- T5 tubes. Aperture lamps with an average lamp life of 9,000 hours
- supplied with cables or rods, transformer, power connectors and isolators

| Item Code: | Size: | Fixing | Cable/rod centres | Price £: |
|------------|-----------|--------------------------|-------------------|----------|
| KXLA1C/SI | A1 | Cables: 4m floor/ceiling | 628 | 443.60 |
| KXLA1R/SI | A1 | Rods: 3m floor/ceiling | 632 | 482.40 |

Cold Cathode XtraLite:

- Cold cathode tube giving an average lamp life of 50,000 hours
- supplied with cables, 12 volt, 60va DC transformer, power connectors, supports and isolators
- frame size 595mm x 960mm

| Item Code: | Size: | Fixing | Price £: |
|-------------|-----------|-------------------------------|----------|
| KXLA1CCT/SI | A1 | Cable: 3m from ceiling only | |
| KXLA1CCT/DB | A1 | Cable: 4m floor/ceiling | |
| KXLA1CCT/WW | A1 | Cable: wall/wall Single sided | |



Ask about other products and services in the range

Sign Systems

Wall mounted supports for signs and graphics

Cable Systems

Suspended and wall mounted cables 1.5mm and 3mm

Rod Systems

Rods can be suspended, wall mounted and used horizontally. 3mm, 6mm and 10mm

Graphic Displays

Extensive range of acrylic pockets, poster holders, and leaflet dispensers

Product Displays

Toughened safety glass shelves, sloping acrylic shelves and acrylic cubes

Lighting

Low-voltage lights that just clip onto the cable and rod systems

Freestanding Display Units

Elegant units designed for holding posters, leaflets and signage - ideal for POP

Moving Displays

E-motion - A truly eye-catching rotating display system for graphics and products

Digital Displays

The very latest in slick digital presentations, ultra-slim unit runs from a compact flash card

Services

Total service from design concepts to project management and installation

For full details visit the website or call now for immediate information

www.fairfielddisplays.co.uk

To order your lightbox call

Fleet: 01252 812211 or Shrewsbury 01743 462472

Showsrooms: 127 Albert Street, Fleet, Hants, GU51 3SN

Fairfield House, Vernon Drive, Battlefield Enterprise Park, Shrewsbury, SY1 3TF